

WOMEN TANK TOPS

STTW038 - STELLA DANCER



The women's cropped tank top

Relaxed Fit

- Sleeveless
- 1x1 rib at neck collar and armhole
- Inside back neck tape in self fabric
- Bottom hem with narrow double topstitch

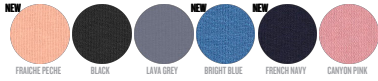
Shell : Single Jersey, 100% Cotton - Organic Ring Spun Combed, Fabric washed, 120 GSM

WHITES



WHITE

COLORS



FRANCHE PECHÉ BLACK LARA GREY BRIGHT BLUE FRENCH NAVY CANYON PINK

ESSENTIAL

HEATHERS



HEATHER GREY

Printing Specifications

For suitable print techniques, please download our printing guide

Certifications & memberships



Wash Instructions

Wash similar colours together, do not iron on print, wash and iron inside out.

